

# Twickenham & Richmond TRIBUNE

## Contents

- TickerTape
- Local Postcard Page:  
Teddington 105 Years Ago
- Vehicle Crossover Policy
- Please Help Tackle Traffic Delays and Disruption
- Stag Brewery in Mortlake
- Mayor Sadiq visits Richmond
- Safety fears over Twickenham Riverside site
- Twickers Foodie
- Traveller's Tales
- WIZ Tales: Iceland – the land of fire and ice
- Could Twickenham be the least loving place in London?
- Council Reports
- Sport

## Contributors

- Alan Winter
- Andrée Frieze, Leader of the Opposition and Ham, Petersham & Richmond Riverside Green Councillor
- James Knight
- Jonathan Hulley, Conservative Parliamentary Candidate for Twickenham
- Ron Mushiso, Conservative GLA Candidate for South West London
- Richmond Park Constituency Labour Party
- Alison Jee
- Doug Goodman
- Mark Aspen
- Richmond Shakespeare Society
- Deep Patel
- St Mary's University
- Richmond College
- Kingston University
- RFU
- Brentford FC
- LBRuT

## Editors

Berkley Driscoll  
Teresa Read



16<sup>th</sup> February 2024

T&RT

# TickerTape - News in Brief

## South Western Railway

The lines in the Wimbledon area will be closed all weekend due to maintenance work.

### Saturday 17<sup>th</sup> February

- **London Waterloo to Shepperton** services will be **revised** and will be diverted between **Clapham Junction and Kingston via Richmond**.
- **London Waterloo to London Waterloo via Wimbledon and Kingston** services will **not** run.
- **London Waterloo to Hampton Court** services will **not** run.
- **London Waterloo to Windsor** services will be **revised**.

### Buses will run between:

Clapham Junction and **Hampton Court** via Surbiton (buses will not call at Berrylands)

### Sunday 18<sup>th</sup> February

- **London Waterloo to Shepperton** services will be **revised** and will be diverted between **Clapham Junction and Kingston via Richmond**.
- **London Waterloo to London Waterloo via Wimbledon and Kingston** services will **not** run.
- The afternoon and evening **London Waterloo to Kingston via Hounslow** services will **not** run.
- **London Waterloo to Hampton Court** services will **not** run.

### Buses will run between:

Clapham Junction and **Hampton Court** via Surbiton (buses will not call at Berrylands)



**The Tree Agency**

darryl parkin

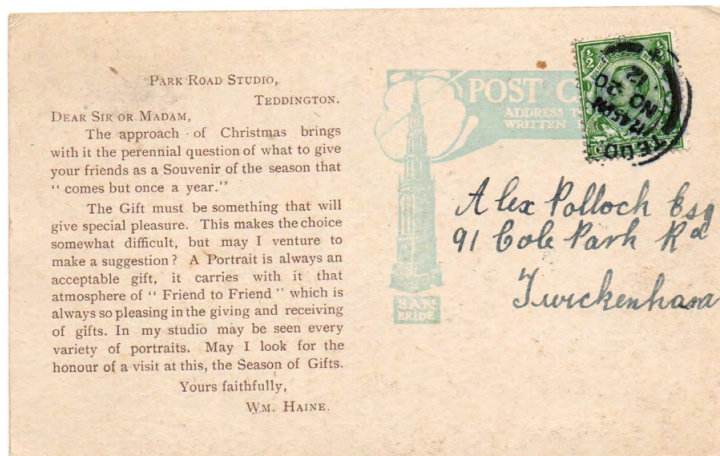
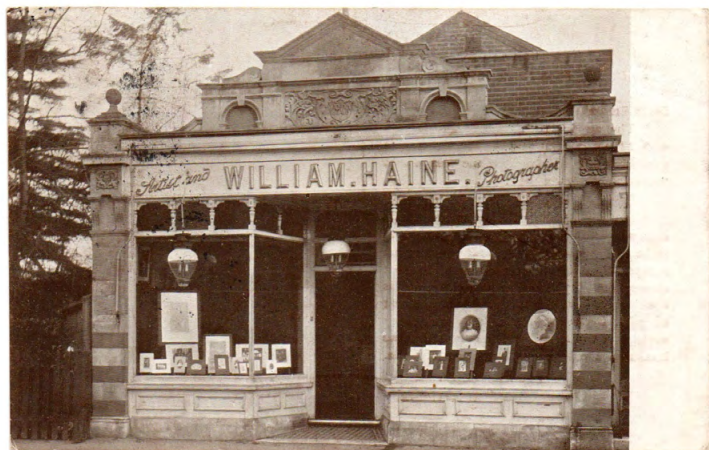
The Treehouse  
25 King Edwards Grove  
Teddington, Middlesex TW11 9LY  
Telephone 020 8274 0107  
Mobile 07960 123580  
Fax 020 8274 0119  
info@thetreeagency.co.uk  
www.thetreeagency.co.uk

# Local Picture Postcard Column - Part 236

By Alan Winter

## Teddington 105 Years Ago

Our postcard journey pauses in Teddington this week. We have two examples of buildings that remain pretty much unchanged for over a century. I am pleased to show these Edwardian postcards from over 100 years ago. Amazingly, the library exterior in Waldegrave Road is pretty much unchanged while the photography shop in Park Road is still there and now trading as a chemist store.



In our first two postcards we see the shop that traded as William Haine, artist and photographer and this postcard was produced by Mr Haine and used as an advertising card to be sent out to his previous clients. The printed reverse of the card requested that the recipient considered a portrait in time for Christmas which could be sent out as a present to family and friends. Posted at the end of November 1912, this is a fascinating example of an early mailshot!



The postcard of Teddington Memorial Library is c1910. The card was published by local Teddington High Street photographer Richard Young. The library opened in 1906 to serve the expanding suburb. It is an example of a "free library". These were built extensively in the UK around the turn of the century. They were expensive to build and stock and the Teddington Library had as a benefactor Andrew Carnegie (1835 – 1919), a Scottish born iron and steel magnate. Carnegie also funded the building of Twickenham Library the following year.

Inside the library there is a bronze memorial wall plaque to author RD Blackmore (1825 – 1900) who lived in Teddington. Blackmore wrote Lorna Doone which was a best seller in its day and remains in print today. Other library fittings include a regulator clock and a bronze bust of Noel Coward who was born nearby.

If you have any old postcards sitting in a box or album at home that you are considering parting with, I'd be very interested in arranging to see them. Please contact me on 07875 578398 or by email at [alanwinter192@hotmail.com](mailto:alanwinter192@hotmail.com) I am happy to pay cash for any postcards or photographs that I find of interest. So don't throw old postcards etc. in the skip or recycling bins. Show them to me first!

# CrusaderTravel

020 8744 0474

[crusadertravel.com](http://crusadertravel.com)

Escapology Experts

[info@crusadertravel.com](mailto:info@crusadertravel.com)



Your friendly local Travel Agency  
established in Twickenham since 1966

With over 50 years experience we pride ourselves on being able to offer an unrivalled service with attention to detail. Come and have a chat with us in our cosy office off the Church Street Square, we are open 6 days a week from 11am until 6pm (Closed Sunday)



# Vehicle Crossover Policy - a backwards step

From Andrée Frieze,

Leader of the Opposition and Ham, Petersham & Richmond Riverside Green Councillor

At Richmond Council's Policy and Performance Review Board (PPRB) meeting this week, Councillors 'noted' the change in its Vehicle Crossover Policy to make it easier to pave over front gardens in the borough, having set the changes in motion last May.

As Leader of the Opposition, I spoke against it, having already voted against it at the Transport & Air Quality Committee in November.

One of the reasons this policy was brought to PPRB, was because the Council wants to tackle unauthorised crossovers into front gardens, which it estimates to be nearly 2,000.

But, rather than enforce a strong policy that provided good outcomes for nature and the climate crisis, the Council decided to enable householders to make it easier to destroy habitats, store carbon-emitting vehicles and introduce uneven surfaces for people walking and wheeling on pavements.

## **Flooding concerns**

Officers said that permeable surfaces and/or grilles will be required to ensure flood risk is not increased. Yet, there is plenty of evidence to show that permeable surfacing does not stop rainwater run-off into road drains, particularly during deluges, because grilles get filled with debris or just overflow. This creates a higher risk of local surface water flooding, which parts of the borough suffers from already. Plus, the run-off puts extra pressure on local drains and sewers, and results in more herbicides, microplastics and other pollutants entering local rivers and groundwaters. All of which ends up costing taxpayers to clean up.

Shockingly, the report that came to the Transport & Air Quality Committee didn't mention flooding. Why not? Had officers even looked into the impact of additional hard surfacing on surface flooding? Given this is one of the main outcomes from getting rid of natural habitat, this should have been a consideration.

Then there's the 10 per cent soft landscaping required in the front gardens when they're paved over by the new policy. At the Transport & Air Quality Committee I enquired how this figure was decided upon. It's a political judgement, I was told. So there's no policy reason or data analysis for it. A figure was chosen because it seemed appropriate. How will the Council enforce the ten per cent soft landscaping and permeable surfaces and grilles? It won't. Just like it hasn't enforced illegal crossovers this policy is trying to fix.

## **Safety and active travel**

At the same Transport & Air Quality Committee, safety was given as a reason for changing this policy. Residents who live on a street where cars park on both sides of the road, impacting sightlines, raised concerns about speeding vehicles. Surely, removing cars from parking on either side of the road will increase the ability of drivers to speed thereby reducing safety. While at the same time increasing danger to pedestrians who are walking on the pavement

and will have to navigate uneven pavements from dropped kerbs and cars backing out from paved-over front gardens.

It's also selfish - putting in dropped kerbs stops other vehicles from parking on the streets, thereby reducing the parking available to visitors, deliveries and tradespeople. Removing the parking stress test from this new policy is also really regressive.

I am really concerned that the Council has been held hostage by small groups of residents who have lobbied Councillors hard to get the restrictions on dropped kerbs replaced, so they can pave over and park on what was once an oasis for birds, bugs and bees.

### **Contrary to other policies**

In the Council's Climate Emergency strategy, it says:

*"We will change our approach to travel in the borough, encouraging a shift away from cars towards more sustainable, low carbon and active forms of travel."*

In the Council's new Draft Local Plan it says:

*"Policies and strategies are expected to focus on creating streets that are pleasant, safe and attractive, where noise, air pollution, accessibility and lack of seating and shelter are not barriers to prevent people – particularly the most vulnerable people – from getting out and about."*

Yet, this policy change does the exact opposite of both these, as front garden parking makes it easier for households to own, park and drive a car, and even to accommodate more than one car. Making car parking easier, electric or not, is simply taking us in the wrong direction.

Too much car traffic has left London with poisonous air and sky-high carbon emissions. That's why London's transport strategy aims to reduce the proportion of trips made by car from 40 per cent to 20 per cent by 2041. This policy does not help with that at all.

Bringing in electric vehicles is already being accommodated in Richmond by one of the highest number of lamp post charge points being installed in London. It does not need to be further enabled by letting residents pave over more front gardens, when electric cars still cause congestion and pollution on our roads with the long term health impacts these cause. The Council is looking to do gully trials to run cables from homes to roads - it should be speeding these up as it's cheaper and less destructive than enabling crossovers.

This whole change in policy by the Liberal Democrat administration simply allows more of our precious nature and biodiversity to be replaced by lumps of metal parked on hard standing, and is taking the borough backwards.

# Council Reports

## Policy and Performance Review Board

13th February 2024

Read the Tribune's report on the Council Meeting held on 13th February.

See the report below on **pages 23 – 25**.

## Next week at Richmond Council

On Tuesday, the **Environment, Sustainability, Culture and Sports Committee** meets to discuss (1) Richmond Leisure Services - Delivery and Management Options, (2) Richmond Climate Emergency Strategy Action Plan - Progress Report, (3) Lead Local Flood Authority Update, (4) Q2 Quarterly Monitoring Report, (5) Directorate Budget Report 2024/25 Including Fees & Charges, (6) Forward Plan. The start time: 7 pm, York House, Twickenham.

On Thursday, the **Education and Children's Services Committee** meets to discuss (1) Home to School Travel Policy, (2) Children and Young People's Plan 2023-28, (3) School Budget Report 2024-25, (4) Directorate Budget Report 2024-5, (5) Achieving for Children Reserved Ownership Decisions, (6) Education Capital Maintenance Program 2024-25, (7) Education High Needs Capital Programme Update, (8) Forward Plan. The start time: 7 pm, York House, Twickenham.

How to participate: members of the public who live or work in the borough can submit questions or speak on an item in the agenda. To ask a question, you need to submit your question by 12 noon, two working days in advance. To speak, you must register by noon the day before the meeting.

For full details, please follow the link [HERE](#)

## Come along to the Middlesex Yeomanry Band Spring Concert

The Middlesex Yeomanry Concert Band are holding a Spring Concert on Sunday 17 March at St James's Church.

The Spring Concert will include a variety of music, including hits from The Beatles, the Prince of Wales's March, and a wonderful evocation of the English countryside with Butterworth's 'Banks of Green Willows' and Frederick Curzon's 'Robin Hood Suite'.

Event details:

- **Date:** Sunday 17 March
- **Location:** St. James's Church, St. James's Road, TW12 1DQ
- **Price:** Tickets are £15 on the door or £12.50 in advance

Guests can enjoy refreshments and will receive a concert programme.

For more information, please contact at [judy.morrison1@btinternet.com](mailto:judy.morrison1@btinternet.com) or 07854 022426.



# Please Help Tackle Traffic Delays and Disruption

From Jonathan Hulley, Twickenham Conservative Parliamentary candidate

We depend on our local road network to go to work or school, to access community services, and to see our friends and family.

When this is disrupted our lives are too, so every measure possible should be taken to prevent and minimise unnecessary disruption on our local roads.

I want to see us tackle traffic delays and disruption in the Twickenham constituency, and I would like to get your views and your experiences to help shape this work.



While some roads repairs are scheduled and licensed by the Local Authority, other “emergency” works are not, and can take place at short notice, with residents reporting multiple works in the same location just weeks apart, and poor quality road repairs or clean up after they have left.

I also want to see us do more to hold the utility companies to account. It is vital we use all measures in a coordinated way to reduce the delays and disruption drivers too often face by these companies digging up our roads, often at very short notice.

The Government is also consulting on measures to improve how roadworks are managed. For my response to this consultation, I am keen to hear your views, and suggestions for improvements.

Please therefore take a few minutes to write to me at [jonathan.hulley@outlook.com](mailto:jonathan.hulley@outlook.com) and help me to help shape improvements to our local transport networks.

## Cambrian Community Centre is recruiting for a Charity Director

A new opportunity has opened up at the Cambrian Community Centre. They're currently recruiting for a Charity Director to spearhead the strategic evolution of the centre.

This is a unique opportunity to shape the next stage of development for the Cambrian Centre. The role will involve focusing on leadership and management, strategic development and community engagement.

The centre is located in an area of social and sheltered housing, the Queen's Road Estate, in Richmond.

Find out [how to apply for the role](#)





# Stag Brewery in Mortlake – Richmond’s largest regeneration project

## A missed opportunity for local families and first buyers

CLLr Ron Mushiso

GLA Conservative Candidate for South West London

Brownfield is good – but not at the expense of affordable housing.

I welcome the recent announcement by the Government to boost housing development on brownfield sites – but this must not come at the expense of affordability. And this is precisely what is happening in Mortlake under the leadership of the Lib Dem council.

Speaking with young families and first-time buyers on the door step each week, the vast majority are in rented accommodation and feel they are being priced out of Twickenham, Richmond, Barnes and Mortlake.

The Stag Brewery in Mortlake is a missed opportunity to keep our first-time buyers and young families local. The site is one of London’s largest brownfield sites, and under more visionary leadership, would have been well underway in its construction. Instead, almost ten years on from its purchase by Singapore-based developer City Developments Limited (CDL), it remains a wasteland due to the council’s failures in securing a minimum threshold of affordable homes.

As it stands today, the LibDem council has approved CDL’s revised planning application to build 1074 homes with 6% of these qualifying as affordable. It now lies with the Mayor of London to decide how to proceed – and remember, his London Plan requires a minimum threshold of 35% affordable homes on any major regeneration scheme, aspiring to 50% in the future. I’m not a maths teacher, but 6% is a long way from 35%.

The Mayor is delivering on average 9,000 affordable homes per year; that is 17,000 less than his own annual target. We desperately need homes for Londoners, and affordable ones must take priority.

In my view, leadership comes from the bottom up. It means working closely with local people and listening to the quietest voices as well as the loudest. It means using the planning



Ron Mushiso at the Stag Brewery Site

process and the London Plan as the blueprint to pursue the highest quality of affordable home building.

The Stag Brewery in Mortlake is an enormous site of over 22 acres - it is the largest development in South West London. On Wednesday 31<sup>st</sup> January 2024, the eight Lib Dem Councillors of the [Planning Committee](#) approved the plans that offered a scant 65 affordable housing units out of the staggering total of 1,075 new units.

I attended that Planning Committee meeting last month where approval was given to develop the Stag site with only 6% affordable housing. I listened from the gallery as Patience Trevor from the [Mortlake Brewery Community Group](#) voiced her concerns on the behalf of her community.



Patience Trevor of MBCG Speaking at Planning

She spoke among other things, of the scale and height of the construction that would undermine the beauty and character of the existing river front; adding that the that plans contradicted Richmond Councils own planning policies.

The Green party Councillor, Cllr Crookdake was equally concerned on behalf of the residents she represents. She lamented the missed opportunity to have more amenities on the site such as a GP Surgery and the retention of the only playing field in the area - which will now be reduced by 60% making it a significant loss of green space.

Georgiana Cox, a young person living close to the Stag Brewery site, told the Richmond Council that her generation would not be able to live in the area they have grown up to love because of a lack of affordable housing. She and others like her feel that the current administration at Richmond Council 'has turned its back' on them.



Only GLA candidate at the meeting

Sadly, the Planning Committee nor the council leadership seems to be concerned. Council leader Gareth Roberts accused local activists of "nimbyism" and blamed their community activism for delaying progress on the site.

This is not the London that I want to see for our residents, and particularly for young people seeking a rung on the housing ladder. You deserve better, and I will fight for your right to affordable housing.



# Twickenham Conservatives

Jonathan Hulley, the Conservative prospective Parliamentary candidate for Twickenham constituency, will be holding a Shadow MP Surgery on **Saturday February 17th from 10am to 12noon.**

The venue will be the Conservative constituency Office, **90 York Road, Teddington, TW11 8SN.**

Jonathan will be in attendance to take up any issue of local concern and give his professional opinion and offer his expertise and support on any matter that you wish to bring to his attention.

There is no need to make an appointment.

## Shadow MP Surgery

Promoted by  
Jonathan Hulley  
of 90 York Road  
Teddington  
TW11 8SN.

**All are  
Welcome  
To attend.**



# Safety fears over Twickenham Riverside site

This week, Richmond Council has erected new eight-foot high-security hoardings around the derelict buildings and former car park on the Twickenham Swimming Pool site. In recent months, numerous reports have been made of teenagers accessing the site and vandalising the buildings.



When the Twickenham and Richmond Tribune visited the site, we could see that teenagers were moving the commercial waste bins along the Kings Street service road so they could jump over the fence at the rear of the site. We also witnessed five teenagers on the roof of the former caretaker's house and other teenagers at the front of the building who seemed to be using it as an unofficial adventure playground, albeit a very dangerous one.

The hoardings will be painted green and have applied graphics advertising the redevelopment which they state will be completed by 2027. An extract below from the planning permission 21/2758/DD01 shows the graphics the council intends to use.

**WHARF LANE BUILDING**  
24 housing units  
A restaurant/gastro pub with external terrace and office space

**A NEW TOWN SQUARE**  
Riverside Activity Zone including pontoon and boat/paddleboard storage  
Reprovision of Diamond Jubilee Gardens

**TWICKENHAM RIVERSIDE**  
coming in 2027

LONDON BOROUGH OF RICHMOND UPON THAMES

# Mayor Sadiq visits Richmond to boost his election campaign

By Richmond Park Constituency Labour Party

SADIQ Khan declared that Labour 'can win' in South West London as he spoke at a major campaign event last week ahead of London Mayoral and Assembly elections on 2 May. The Mayor was speaking at a Labour Party dinner at Richmond Cricket Club which aimed to raise funds for his bid for a historic third term at City Hall and the campaign to see Marcela Benedetti elected as Labour's first London Assembly member for the South West constituency which covers Richmond, Kingston and Hounslow.



Sadiq spoke of his achievements in freezing TfL fares - recently announced for a fifth year, starting next month - and delivering free school meals for all state primary school children in London, saving parents up to £1,000 over two years, as well as increasing Met police officer numbers by 1,300 since 2016.



*"Just imagine what we can achieve with a Labour Mayor working with a Labour government,"* the Mayor declared to an audience of more than 120, pointing to the general election expected this year. He praised his 'friend' Marcela, who was born in Argentina and came to London 2007 with her small son in tow and unable to speak English, and whose career has been in the domestic violence sector. *"Marcela's story is London's story,"* Sadiq said.

Rising support for Labour across South West London boroughs would mean a boost both for his vote in what is expected to be a close two-horse race in the 2 May mayoral contest and for Marcela's bid to become the first Latin American London Assembly member, replacing the Conservative Party in the seat. *"Make no mistake,*



*Labour can win in the South West,"* Sadiq said. Marcela spoke of her love for South West London, where her child and step-children attended state schools in Teddington and Twickenham, and told how both her job and her shifts as a volunteer in a Kingston community kitchen had put her on the front line, helping people hit by the cost-of-living crisis made in Downing Street. *"I saw first-hand the deterioration of our public services thanks to Tory government cuts, and I witnessed the values that made me choose the UK as my home trashed,"* she said.



Marcela and Sadiq were supported at the dinner by local Labour MPs Ruth Cadbury (Brentford & Isleworth) and Fleur Anderson (Putney), as well as by Ellie Stringer, Labour's candidate for Wimbledon in the forthcoming general election. Journalist and broadcaster Kevin Maguire was master of ceremonies.



# New Diagnostics Centre for West Middlesex University Hospital

The final approval has been given to start work on the £80 million diagnostic centre, with construction starting this spring and scheduled for completion in summer 2006. The six-story building will provide diagnostic and treatment services for cancer, renal and images for residents in Ealing, Hounslow and Richmond boroughs.

The new centre will be built between the Marjory Warren main building and Park Road. At the planning application stage, Historic England objected, saying it would impact one of the key views from the Grade I registered Syon Park due to its height of 25 meters. However, planners found that the benefits of the building outweighed the harm to the heritage assets.

Lesley Watts CBE, Chief Executive of Chelsea and Westminster Hospital NHS Foundation Trust, said: "I'm delighted that this new diagnostic centre at West Middlesex Hospital will bring care closer to home for hundreds of thousands of local residents. Thanks to this investment, we will speed up diagnosis and treatment helping improve outcomes for patients in our community for years to come."



## Join a conversation with the Metropolitan Police

Come along on Tuesday 19 March to find out, and influence, how the Metropolitan Police Service is changing to deliver more trust, less crime, and high standards for Londoners.

The free event will take place from 6 to 9pm at The Wetlands Centre, Queen Elizabeth Walk London SW13 9WT.

Guests will have the chance to learn about the new plan, a New Met for London, created following feedback from 10,000 community members, partners, and Met people. Join officers in a conversation for what the plan means for improved policing.

Come along share your views and help shape the reforms being made and the service to your community.

[Reserve your space](#)



**METROPOLITAN  
POLICE**



# HAMPTON CHORAL SOCIETY

## Rossini's Petite Messe Solennelle

**Musical Director - Richard Harker  
with professional soloists**

**Saturday 23 March 2024 - 7.30pm**

**St James's Church, St James's Road,  
Hampton Hill, TW12 1DQ**

**Tickets: £15 (Adults), £7 (Under 16's)  
Box Office: 020 8941 5394**

**On the door: contactless, card, cheque, cash  
[www.hamptonchoral.org.uk](http://www.hamptonchoral.org.uk)**

Charity Number 261788

## FEB FOOD AND DRINK NEWS

Bone broth is good for us: fact. Searches for 'bone broth' are up 163% year on year according to Waitrose. Used for centuries to soothe the body and support the immune system, nutritionists have long hailed its benefits: glycine to support sleep; collagen to slow the ageing process; gelatine for gut health and amino acids for joints, immunity and inflammation. Whether in soup, bowls of noodles in broth, or a stew, they're highly versatile. Simmered for 24 hours using organic ingredients and British spring water, **Borough Broth's** Great Taste award-winning, delicious and easy-to-use pouches have deep flavour and nourishment. Waitrose is stocking its 324g pouches of **Free-Range Organic Chicken Bone Broth** and 324g **Grass-Fed Organic Beef Bone Broth**, for £5. They're also available at Ocado, Wholefoods and other health food outlets.



And a host of other delicious flavours available on the Borough Broth website [here](#)

Another Great Taste Award winner, **MOMO Kombucha**, has launched a new, hyper-seasonal, limited-edition **Tomlinson's Forced Rhubarb Kombucha** (RRP from £4.50 per 330ml glass bottle). It's in collaboration with **Natoora** ([www.natoora.com](http://www.natoora.com)), and available from MOMO, Nattoora, Selfridges and Whole Foods, (due to be available until the end of April). It's a little bit sweet, a little bit tart, and delicious. It uses forced rhubarb from Robert Tomlinson, one of few left in Yorkshire's "Rhubarb Triangle" still practising this age-old technique. 10p from every bottle sold is donated to **Natoora's Farm Fund**, supporting young farmers



committed to agroecological methods. Find MOMO Nattoora Tomlinson's Forced Rhubarb at Selfridges, Whole Foods, Nattoora and via [www.momo-kombucha.com](http://www.momo-kombucha.com)

You may already be aware of the **Strong Roots** range of yummy frozen vegetable fries, but these pioneers in plant based frozen food have just launched a range of ready meals. They're low calorie and fat, and high in protein. There are five in the range: Thai Green Veg Curry; Veggie Masala; Creamy Mac; White Bean & Lentil Tomato Stew and Mediterranean Orzo Bake. At around £3.50 a pack, they either provide a meal for one, or a delicious side for two. Available from Ocado and Sainsburys.



Saké's a versatile alcoholic beverage made from rice, comprising four ingredients: rice; water; yeast and fermenting agent koji.

Appropriately-named, **SoGood Saké Junmai Daiginjo**, is, actually, so good as a cocktail ingredient (served with tonic for a lighter abv alternative to a G&T). It's also vegan, gluten, preservative and sulphate free and low calorie. I love it chilled, and served over ice: well-balanced and easy to drink, with crisp minerality and citrus flavours rounded out with hints of sweetness, melon and a nutty finish. Around £35 a 75cl bottle from Master of Malt.

**Sapling Spirits** was founded as the world's first climate-positive British-made spirits brand. Made in the U.K, **Sapling Climate Positive vodka** uses local ingredients to reduce transport emissions. It's four times distilled from 100% British wheat and blended with charcoal filtered, deionized water. For every bottle sold a tree is planted. A unique code tells you what tree was planted where, and about the planting project. One tree can absorb 1.5 tonnes of carbon in its lifetime. So a bottle of vodka emits about 2.5kg of carbon, meaning each bottle of Sapling pays back over 535 times. It's gluten free, vegan, incredibly smooth and available in Waitrose at £32 for a 70cl bottle.





## RESTAURANT NEWS

It's all happening in the Richmond and Twickers area!



**Rosa's Thai** will open the doors to its newest restaurant in **Richmond** on **Monday 18th March**. To celebrate, there's a soft opening where guests will have 50% off the food bill during its pre-opening period from **Tuesday 5th to Sunday 17th March** inclusive. An ideal spot for lunch or dinner after a stroll around town, Rosa's will bring vibrant Thai cooking to Richmond, with dishes made freshly to order, including

spicy *drunken noodles*, fragrant '*som tum*' *papaya salad* and, of course, *pad thai*. Guests can also enjoy Rosa's Thai-inspired cocktails from *dragon star martinis* to *chilli lageritas*, as well as their signature range of *bubble teas*. **Rosa's Thai** first opened in Spitalfields back in 2008, transporting co-founder Saiphin Moore's authentic Thai cooking from the East to the East End of London. The teams at each site use the best Thai produce, including curry pastes from a husband and wife team in the Huai Yod district and noodles from a 3rd generation family business. Now with 39 restaurants across the UK, guests at Rosa's can expect Bangkok cafe-inspired interiors, flavourful cooking and warm, friendly service. Bookings are now open [online](#).



**Cinnamon Bazaar Richmond** takes inspiration from the hustle and bustle of India's ancient and modern bazaars, where you can expect a menu that packs a punch with spiced sharing plates, signature sips and an iconic roaming chaat trolley. **Vivek Singh**, the man behind some of London's most popular Indian restaurants, including The Cinnamon Club and Cinnamon Kitchen, is bringing **Cinnamon Bazaar** to Richmond from early March. From a Bazaar breakfast with spiced eggs, through to a roaming chaat trolley, vibrant sharing plates and spiced cocktails, this is modern Indian dining that packs a flavoursome punch. Cinnamon Bazaar Richmond's menu will run from breakfast through to dinner and features pan-Indian, street food style dishes, along with a new innovative range of vegan friendly plates, that blend modern cultural influences with classic spices and flavours.



And apparently **Ottolenghi** is to open a deli and restaurant in the old **And So to Bed** site near the Odeon - very exciting news for Ottolenghi fans like me. Rumour has it that **Sticks'n'Sushi** is going to be opening soon in the old House of Fraser building, but we don't yet have an opening timescale.

And **Megan's** will soon be opening in Twickers (in May I believe) but in the meantime, you can sign up for the soft opening and see more info and the menu on the link [here](#). And there is already a thriving branch in Richmond, don't forget.

But sadly, the **Fat Badger** has just announced that it is closing after two years in Richmond. But for fans, there are other sites in and around London still: **Gladwin Brothers** restaurants continue to thrive at, **The Black Lamb** in Wimbledon Village; **The Shed** in Notting Hill; **Rabbit** in Kings Road Chelsea; **Sussex** in Soho.

But sadly, the **Fat Badger** has just announced that it is closing after two years in Richmond. But for fans, there are other sites in and around London still: **Gladwin Brothers** restaurants continue to thrive at, **The Black Lamb** in Wimbledon Village; **The Shed** in Notting Hill; **Rabbit** in Kings Road Chelsea; **Sussex** in Soho.

But sadly, the **Fat Badger** has just announced that it is closing after two years in Richmond. But for fans, there are other sites in and around London still: **Gladwin Brothers** restaurants continue to thrive at, **The Black Lamb** in Wimbledon Village; **The Shed** in Notting Hill; **Rabbit** in Kings Road Chelsea; **Sussex** in Soho.

# WIZ TALES: ICELAND – the land of fire and ice

Teresa Read



## Residents of Grindavik to be compensated for the loss of their homes.

As the Eurasian and North America tectonic plates pull apart with hot molten lava flowing, the residents of Grindavik have tried to divert the flow of magma by building walls from volcanic rock, but with little success.

The government of Iceland has said that it will buy residents' homes in the fishing town of Grindavik, no longer habitable, following the recent eruptions.

The airport is about a twenty-five minutes' drive from Grindavik, ten miles south west of the airport, but flights are not affected at present.



Eyjafjallajökull Eruption

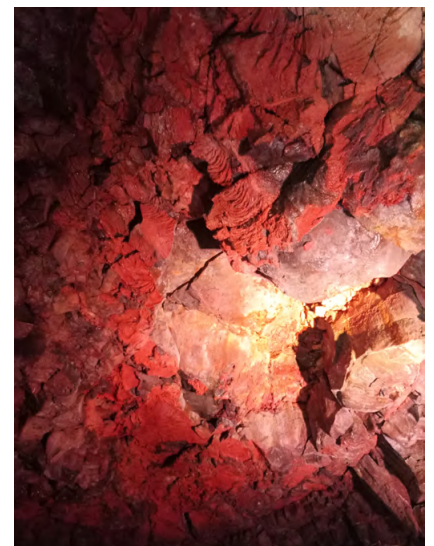
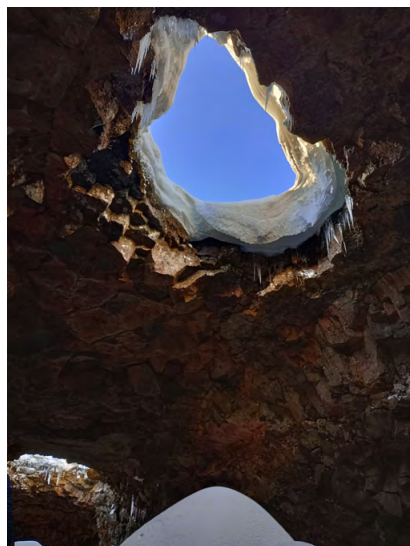
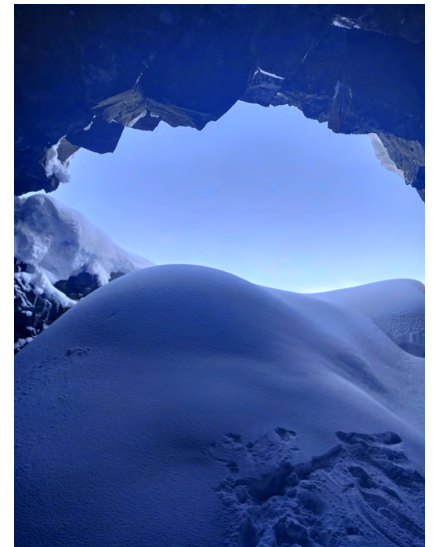


Sundhnúkur eruption 8 February 2024



Grindavík with the 14 Jan 2024 eruption

A contributor to the worldinfozone.com website has been visiting Iceland during the last week and has sent scenic photographs of the icy landscape, shown below.



# Traveller's Tales 155

## Mysterious Man



Doug Goodman Visits Ellan Vannin

'Don't mention the word rat,' I was told by our guide as we drove from the airport to Douglas, capital of The Isle of Man. They must be referred to as the long tails. We crossed The Fairy Bridge and were advised to think or say something nice about the little people. The Manx islanders never use the word fairies, instead they speak about the little folk, who are about two feet tall, very wise and often seen riding a horse. They enjoy being mischievous so it's essential to speak kindly of them in case they are listening and decide to play a trick on you. Many stories describe frightening beasts that you certainly wouldn't want to meet on a dark night. One particularly ugly character is the hairy and very strong Fynoderee. Although he has a bad reputation he often helps farmers but must never be seen. A new distillery carries his name. The worst of the hundreds of creatures roaming the Island are the cruel Bugganes. Whether these fascinating and colourful stories are perpetuated for the benefit of visitors I wondered. But learning about The Island's 10,000 years of history, tales of Viking conquests and Gaelic traditions, I'm sure there's a basis for believing the legends connected to the small 30 by 10 mile island with a population of 80,000. 'Manx Fairy Tales' by Sophia Morrison, published in 1911 and republished in 2013, is full of wonderful illustrations and stories.



Greet the Little Folk



Viking Heritage



Isle of Man



Douglas

### SO MUCH TO SEE

A three day visit gave me an excellent overview of what The Isle of Man has to offer but a week or two would give a better insight into its history, culture, language and traditions. I stayed at the seafront Hotel Empress with views over the Bay of Douglas and its castle and within walking distance of the port and centre. Nearby is a statue of former island resident, the comedian Norman Wisdom, who was very popular in Albania during the rule of communist dictator Enver Hoxa. The Manx Museum in Douglas is a good place to begin your visit. The island's early history, its wildlife and the development of the world famous TT motorcycle races are well displayed. Over forty percent of the island remains undeveloped thus offering plenty of space for its mammals and birds. Four pairs of puffins have been observed recently. There are no foxes, badgers and snakes but probably lots of those long tail creatures. You might also spot some of the 100 wild wallabies. I had hoped to see a Manx cat but could only find a stuffed specimen. They are quite rare and difficult to breed. Owners wisely keep them in doors as far as possible. For star gazers the Island is noted for its clear dark skies.

The scenery ranges from views over a sparkling Irish Sea to mountain peaks and from pretty villages to wide-open moorland. For climbers there are 25 peaks over 1000 feet, well marked trails and the 100 mile coastal path – the Raad ny Foillan. Cycling is popular or you might fancy a chauffeur driven trike tour. Waterfalls, coves, valleys and ancient fortifications are to be seen everywhere with exploring made easy by the heritage railway network. The island's 32 beaches are perfect for children while watersports and diving are available.



No Tail



Norman Wisdom  
Commemorated



TT Racing Bike



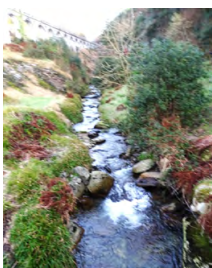
Car Number Plate

## FOOD AND DRINK

The Isle of Man has a reputation for fine food based on a wide range of locally caught fish, especially the King and Queen scallops, fresh produce sourced from within the island and excellent spirits from a craft distillery. A particular treat was a tour of the Fynoderee distillery in Ramsey. We arrived at the door by special electric tram, watched gin being made and tried a few varieties. The various blends are produced using flame fired copper pot stills and feature locally grown botanicals. The RNLI gin, dedicated to the 200th anniversary of the lifeboats, was rather fine and all the better for knowing that every UK lifeboat station will receive a free delivery.



Walking Country



Plenty of  
Streams



Fynoderee Gin



Guardian of Douglas Bay

Visit The Isle of Man and you'll be in the world's only nation known as a UNESCO Biosphere- a special place on earth where life dwells in abundance. It can be reached by ferry from Heysham on a four hour crossing. Several UK airports have short duration flights to the island. I got an EasyJet Gatwick flight from for £19.99 one way.

More information from [www.visitisleofman.com](http://www.visitisleofman.com)

Doug Goodman was a guest of The Isle of Man tourist Board.

Next time – trains, historic sites and a WWI internment camp.

# Could Twickenham be the least loving place in London?

By Deep Patel

~ Through the Eyes of a Twickenham Shopkeeper ~

So how many of you reading this right now sent a Valentine's card this year? How many of you received one? If you did neither of these, join my club...I also did neither of these...but the most astonishing thing of all for me as a Twickenham shopkeeper was that this year Meet & Deep newsagents (our shop) has sold the least amount of Valentine's cards and boxes of chocolates of any year in the entire time that we have existed...but why? Could it be that Twickenham has become the least loving place in the whole of London?



I was genuinely confused...we always have a quiet February until the 13<sup>th</sup> and 14<sup>th</sup> of February when we end up selling 80% of our Valentine's Day stock...so we waited with great anticipation until these two dates came...and went...and we sold a grand total of five Valentine's Day cards and zero boxes of chocolate...that is an all-time low record for us...

None of our customers were even talking about Valentine's Day...they were just popping in our shop to buy their milk and newspaper...love definitely was NOT in the air on Hampton road Twickenham...the only thing in the air there was the fumes of the 281 bus as it stopped outside our shop and the smell of slightly rotting food from the full-up public dustbin on our shop doorstep...nice.

So what could be the reason for such dismal sales when it comes to Valentine's stuff at Meet & Deep this year? I felt that as a Twickenham civilian and local shopkeeper, it was my duty to find out more...so the following day, I spent much of the day asking customers in my shop whether they sent a Valentine's Day card and whether they received one..90% of my customers answered "no" to both of these questions...well that explained why I had sold practically nothing from the Valentine's section in my shop...were my customers just not loving? Then as I was giving up hope...a man came to the shop counter and paid for a KitKat...and as he was about to leave the shop he turned back and walked back in and said "oh dear, I nearly forgot, it's Valentine's day" and walked towards my Valentine's section...I felt a warmth in my heart and a smile came to my face...then he walked right past the Valentine's section and to the medicine shelf...I watched as he took a box of paracetamol tablets and placed them on the counter...he then looked at me, pointed at the box and said "I nearly forgot it's Valentine's Day"...I was confused...I said back "paracetamol?" and he replied... "that's right, most nights I can avoid sitting with my wife for too long, but tonight as it's Valentine's, I will have to sit with her and listen to her crap the whole night so I will need these paracetamol tablets after"...Well I was lost with what to say to him...

Was that all that Valentine's Day had become in Twickenham? A day of forced togetherness?

That whole day I hardly saw anyone walking past my shop carrying gifts for loved ones or anything...then finally I saw a young man, he was around 19 years old, walking down the road alone, late in the evening with a smile on his face and holding in his hand nothing but a beautiful deep red single rose...I thought to myself, ahhh that is who this day belongs to, the youth of Twickenham...young love...the lad had probably just finished work and was on his way home to see his partner judging by the beautiful rose and smile on his face...like a classic love story...

As the young man walked by, I wanted to say something...I was so starved of the Valentine's feeling that I wanted to share his moment and feel a part of it as he was about to walk past my shop door...young love I thought...the romance...the fun...the laughter...being in love...As he walked by, I said "nice rose!"...he turned back and said "thanks, it's for my mum"...as I watched, he walked a little further and his mum was walking towards him from the opposite direction...she gave him the biggest hug and he gave her the rose and held her tight...and there it was...that warm feeling from within me that I had been craving all day as I realised that Valentine's Day was about love...and after all, what love could be purer and more unconditional than the love of a mother...It was perfect.

**Remember...**

***"Love your mother...you will never have another"***

## **CREATURE-KINDNESS TIP OF THE WEEK:**

FOR ANY HOME OR GARDEN "PEST"...

Sprinkle talcum powder, essential peppermint oil or white vinegar around where they come (but not directly on them) and they will stop without having to harm or kill them...you will get blessings in your life or have good karma for choosing a kind way too! This remedy also works to deter virtually any insect without harming them...like it & share it! For more tips, email: [InsectLoversUnite@gmail.com](mailto:InsectLoversUnite@gmail.com) or join my Facebook group: "INSECT LOVERS UNITE". Thank you



## *The Boy at the Back of the Class*

by Nick Ahad, based on the novel by Onjali Q Raúf

Rose Original and Children's Theatre Partnership at the Rose Theatre, Kingston until 22<sup>nd</sup> February

*The Boy at the Back of the Class* powerfully depicts the arrival in London of child refugee Ahmet and how he navigates his complex disorientating transition. Director, Monique Touko interweaves themes of friendship, camaraderie and acceptance into the complex tapestry of alienation, bullying and trauma, creating a roller coaster of emotions.



We are transported into the world of the primary school where evocative use of wooden PE climbing bars, the staple of many a school hall, cleverly depict different landscapes within the school and out and about. A blue parachute recreates powerful waves, Ahmet's journey both literal and symbolic as he moves across oceans and cultures.

A close knit friendship group welcome Ahmet into their gang with innocence and enthusiasm, offering sweets, a resourcefully sourced pomegranate and the universal language of football. Skilled movement and mime, and fight choreography, artfully recreate the school playground's football game. The cast members, all adults, portray their nine year-old characters with such playfulness and subtle attention to detail, that we forget the age discrepancy.

Farshid Rokey's portrayal of displaced child refugee Ahmet stands out as he breaks the fourth wall to address the audience about his disorientation in this strange world around him, inviting us to listen to his story and stand in his shoes.

Quick and slick costume changes introduce adult characters in this frenetic world, a lovely-jubbly London cabby, antagonistic parents at the school gates, and teachers, kind and unkind.

The action moves between joyous excitement and the uncomfortable witness of discrimination, then back again to comedy and almost panto-like fun, where heroes triumph and baddies get their just deserts. *The Boy at the Back of the Class* shows that small simple acts are like pebbles thrown into the water, causing ever larger ripples that lead to powerful change.



Read Thea Diamond's review at [www.markaspen.com/2024/02/10/boy-back-class](http://www.markaspen.com/2024/02/10/boy-back-class)

Photography by Manuel Harlan

# Pretty Woman

by Bryan Adams and Jim Vallance, book by Gary Marshall and JF Lawton

ATG Productions at the New Wimbledon Theatre, then on tour until 28<sup>th</sup> September

Few who come along to *Pretty Woman* would not have an expectation of a massive injection of light-hearted escapism. Welcome to a world where the story of Cinderella meeting her Prince Charming is re-worked. Here, poor Cinders is reduced to a sex worker plying the streets of LA, while her Prince is a rich businessman seeking to pay for a high-class escort.

Director Jerry Mitchell creates a slick piece of musical theatre. It exudes cosy nostalgia, where even the sex workers, parading in skimpy leather, denim and fishnets, all seem cute and homely. In the more innocent 1980's nothing's sordid and the score lifts a seedy storyline into something wholesome and enjoyable, and with punchy songs and lyrics.



*Love Island* to *Dancing on Ice* celebrity, Amber Davies brings a confident dynamic to the leading role of Vivien. Her portrayal mixes a tough exterior with a homely charm and astuteness. The scene where Vivien gets her own back on snooty shop assistants is priceless.

Oliver Savile brings an energy and conviction to the character of Edward. He fleshes out his character well and the scenes between the two protagonists are effective and reflect, with passion and sincerity, a plausible growing relationship.

As Kit (Vivian's fellow sex worker), Natalie Paris displays an impressive stage presence and an extensive vocal range. Equally impressive is Ore Oduba in his double role as the hotel manager and a character called simply Happy Man

With its nod to *Pygmalion*, and shades of *Violetta*, the Parisian courtesan from *La Traviata*, this is an enjoyable musical rom-com. More pertinently, it is a parable about a relationship where each character enables the other to escape from their immediate world, his from the dubious business of asset-stripping and hers from a life of prostitution.

Then again, it's probably better, hearing the famous beat that opens the titular Roy Orbison classic, just simply to enjoy the final audience sing-along, to the strains of *Oh, Pretty Woman ... .. Mercy!!*



Reda Michelle Hood's review at [www.markaspen.com/2024/02/13/pretty-woman](http://www.markaspen.com/2024/02/13/pretty-woman)

Photography by Marc Brenner



## *The Handmaid's Tale*

by Poul Ruders, libretto by Paul Bentley  
English National Opera at the London Coliseum

The huge Coliseum stage is filled from the beginning with 'Handmaid' effigies which gives a sense of foreboding to ENO's revival of Annilese Miskimmon's *The Handmaid's Tale*. The sparse staging spares no details of ritualised feelingless sex, or the birth of a much needed baby torn from her Handmaid mother to be given to her 'Wife' mother, haughtily celebrating with children's party hats and champagne. The metronomic movement of the Handmaid's chorus submitting to constant surveillance of their menstrual cycle adds to the sense of repression.



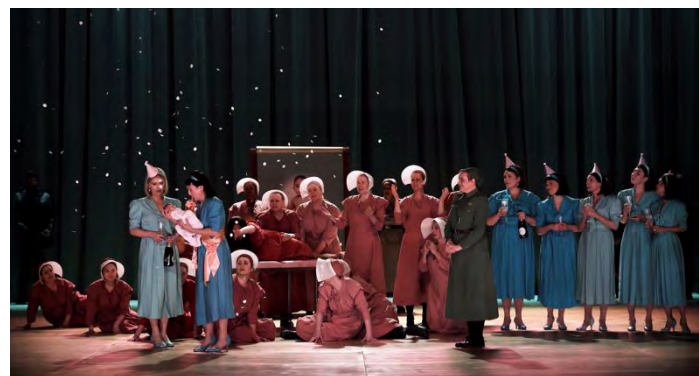
This may sound shocking and unlikely material to bring to an operatic stage, but the real achievement of this production is that everything is so horrifying clean and austere that it is utterly immersive and gripping. Ruders deliberately pared-back score, strangely discordant but clear and accessible, brings this to life with haunting sustained lines, fleetingly broken by moments of lush musical depth when the Handmaid Offred recalls past moments of love and closeness.

Kate Lindsey, as Offred, brings a real musicality to this emptiness and creates a performance of stature on the huge empty stage. Avery Amereau's mellow alto voice is a haunting contrast as Serena Joy. The score brings us very little ensemble singing as if to heighten the loneliness of Gilead society, and when it does they are moments of great significance such as Offred's memories of her past life. Lindsey underlines Ruders' leitmotif phrases by

complete lack of vibrato, adding to the bleakness.

As in Margaret Atwood's novel, *The Handmaid's Tale* opens in 2195 at the XII Symposium on the, now past, Republic of Gilead. Juliet Stevenson, in the spoken role of expert historian Professor Pieixoto, adds real gravitas with the perspective of time.

The end is ambiguous, the fate of Offred unknown, as she tries to escape over the wall of the fallen. Is there hope with the final vision blindingly backlit in a seeming clearing of clouds? *The Handmaid's Tale*, with its rare combination of clinical emptiness and enormous sensitivity, is as beautiful as it is hauntingly powerful.



Read Claire Alexander's review at [www.markaspen.com/2024/02/02/handmaid-24](http://www.markaspen.com/2024/02/02/handmaid-24)

Photography by Zoe Martin



# Council Reports

## Policy and Performance Review Board

13<sup>th</sup> February 2024

By James Knight

The first item the committee discussed was the **Pools on the Park Booking and Pool Timetable Review**. By way of background, last summer, the Council came under fire in the national press, with the Daily Mail printing the headline, *'Fun is strictly NOT permitted!*' Historic council-owned Richmond lido bans sunbathing - and family swims - so upmarket locals can swim al fresco in peace. This referred to the council's practice of only using the outdoor pool for lane swimming rather than leisure during term time.

A representative of the pool users group said that she was pleased the number of swimmers had increased by 50% in the past year. She said some users liked the booking system and others didn't. But there was unanimity that the arrangements for the outdoor swim and stay sessions needed to change as seven hours was too long and the fees were too expensive.

The second speaker was a gold card holder and said she swam in the outside pool five times a week. She said last year's outdoor swim and stay program was 'woefully underutilised' due to the cost of a family of four being £44 for one session, which was at least 40% more expensive than at Hampton. She said many times last year, there were only a handful of people in the outside pool, and often, there were more security staff than swimmers. She said the community of regular swimmers was outraged by the situation and the management's refusal to make changes. The third speaker said the hourly slots should be retained rather than reduced to 45 minutes. He also commented that the outside pool was nearly always empty at 10 am in the summer, as children do not like getting up early during the holidays.

Cllr James Chard (Twickenham Riverside) asked if demand lead pricing could be used to manage demand. The officers said they wanted to be more commercial, have simpler prices, and encourage people to take up memberships. It was also added that six hundred to over a thousand people could be trying to gain access to the outside pool on a hot day. The new booking system was a learning curve for them, and they did rethink and reduce the booking window, introduce a mixed ability lane, and reduce general swims on days the weather was not good.

Cllr Chard then suggested that the 'very generous discount for senior citizens' should only apply at certain times of the day or even remove and replace it with an off-peak rate available for everyone. Cllr Jonathan Cardy (Fulwell and Hampton Hill) suggested they should have a WhatsApp channel to broadcast when the outside pool was reserved for stay and swim sessions or when it was being used for lane swimming. Cllr Caroline Wren (Fulwell and Hampton Hill) said she backed Cllr Chard over demand-led pricing. She said that the council should be able to learn from the arts sector and use differential pricing.

"We don't have a good concessionary offer" was why officers gave for the low membership figures. From memory, our concessionary swims about four pounds fifty or four pounds eighty, and for someone over sixty, it's about two pounds something. We have someone on means-tested benefits paying nearly double what retired people are paying, and retired people probably have a lot of disposable income in this borough. The officer added that the data on why members leave shows it is due to lack of access to group exercise, quality of the equipment, and the need for investment. Cllr Ben Khosa (St Margarets

and North Twickenham) asked if prices could be reduced to be closer to those at Hampton Pool, where a swim was up to 60% cheaper. Officers replied that Pools in the Park were significantly more expensive to run as the main pool was indoors, and they were not a charity.

The chair, Cllr Richard Warren (North Richmond), agreed with the committee the resolution should be (a) Swim England should review the booking arrangements for the pool, (b) note the value of the online booking system and support its continued use, (c) offers views on the arrangements of the booking system and the summer use of the outdoor pool, (d) notes and endorses the recommendations arising from the Swim England booking review. Amongst the views expressed is the need to level out concessionary prices and have a discount in off-peak times, pushing back the start of the stay and swim sessions and expanding the marketing campaign.

The second item was the corporate performance report for the council. The officer who presented the item said that each relevant committee had gone through them in depth, and no referrals had been made to the Policy and Performance Review Board. Cllr Chard said he didn't feel it was right that green ratings were given when a performance was below target by up to 5%. Many questions could not be answered as no officers from the relevant departments were at the meeting. Cllr Richard Baker (Teddington) asked what led to the improvement in waste collection, the officer said that was the result of a lot more monitoring of the contractor. Cllr Wren said the council had been looking to adopt a leisure, sports, and physical activity strategy for about two years. She was told it would come to the committee in June or July. Cllr Chard asked about the green status next to the domestic refuse capacity as the occupancy was 99% against a target of 90%, but this could show a capacity problem. Cllr Chard brought up the calls answered within 20 seconds by the council's contact centre "way below target and falling." The committee agreed to note the report.

The next item was **vehicle crossovers**; the officer introduced the report and gave an update to the committee on the progress made. Councillor Andrée Frieze (Ham, Petersham and Richmond Riverside) spoke as an interested councillor. She said when the issue was originally brought to the Policy & Performance Board, the council wanted to tackle the estimated 1,500 illegal crossovers. But rather than enforcing the existing policy, which was good for the environment and the climate crisis, you decided to enable households to make it easier to destroy habitats to store carbon-emitting vehicles and introduce uneven pedestrian surfaces. She said that the council criticised Thames Water for wanting to put treated effluent into the river; we are not stopping it by directing more water into drains. She said it would increase surface flooding, and the 10% soft landscaping was "plucked out of thin air" with no research to back it up and was a political decision. How will the council enforce the permeability and 10% - especially as it has not enforced the previous rules? She said that she is concerned the council has been held hostage by a small group of residents who have lobbied hard to get these restrictions replaced. The Council's climate emergency strategy states the council will change our approach to travel in the borough, encouraging a shift from cars towards sustainable, low-carbon, and active forms of travel. This policy does the exact opposite.

The chair of the meeting said that the decisions have already been made by the relevant committees, and the board is not a decision-making body. Cllr Khosa asked her what she meant by the 10% soft landscaping being a political decision. Cllr Frieze replied that if you check the minutes, that is the explanation. You shouldn't just note the decision; it was poorly made, as the council did not look at the flooding issue. Decisions have been made by members without any basis in data or fact. Cllr Richard Payne (North Richmond) agreed with Cllr Frieze but added that the aesthetic impact was not mentioned and thought it was "a big mistake." He said that one of the great things about this borough is that many streets are extremely beautiful to look at and that it is a great sadness that, as a council, these two committees have made converting their front gardens into car parking easier.

Cllr Alan Juriansz (West Twickenham) said that the previous policy was not working as there were an estimated 1,500 to 2,000 illegal crossovers, and they have no restrictions on the type of services they use. Cllr Wren said Richmond council has moved from leaders in protecting the environment to laggards. We talk about the policy not working, but for whom? A few residents wanted a bit more convenience to park closer to home. Cllr Juriansz clarified that not working meant not stopping people from paving over their gardens. Cllr Baker added to what is going to unauthorised driveways already there. The committee noted the report and asked for a report in a year to update on the progress.

Next up was the Education and Children's Services Committee referral. They asked the board to look at the **housing allocation scheme** and to see if children with special educational needs, those with child protection issues and care leavers could have more priority. Cllr Cardy asked the council to move to a choice-based system where people bid for homes rather than just being allocated one. He said that as the council builds more car-free developments, those who drive a car would be unhappy to be allocated a house in such a development. Cllr Jim Millard (Hampton Wick and South Teddington) said he thought the current system was best as choice-based letting would be "an illusion of choice." Officers said the arrangement with housing associations gives the council nomination rights to 50% of one-bedroom units and 75% of family units vacated yearly. The officer said he thought choice-based letting systems would be "a bit of a con" as they have 6,000 people on the waiting list, and we let about 300 to 350 units annually.

Cllr Pyne said he thought priority should be given to needy children as these can be the most distressing cases. He said he gets cases where families get evicted and end up in Croydon or near Heathrow Airport. That means they must choose between moving schools or having excessively long commutes, which makes me profoundly sad for them. He said we must build more social housing in the borough and prioritise families with children. Jim Millard said the supply of privately rented accommodation the council had traditionally used for temporary accommodation has evaporated. He said that the council's main housing provider, Richmond Housing Partnership, has a massive backlog in refurbishing empty homes (voids), which means many more people are in temporary housing as a consequence.

Officers said that of the supply of one-bedroom units, they have allocated half to those currently in temporary accommodation, whilst for family units, it's more like 60%. They added that around a third of temporary placements are outside the borough. Cllr Chard said that the problem is not allocation but lack of stock. The committee noted the referral and forwarded it to the Adult Social Services, Health and Housing Committee to consider when the 2024/25 lettings plan is considered. They added that there needed to be more pressure on private developers to include social housing, the council needed to build more council housing itself and incentivise more people working in the construction industry to live in the borough.

The last item was the **committee's work programme**. Cllr Wren asked for a review of the council's communication regarding closing the health suite/spa facilities at Pools in the Park. She said the council had raised users' hopes by suggesting that an environmentally friendly replacement could be provided but took the option off the table before the committee met. Cllr Chard doesn't think this board should not be a 'court of appeal' for decisions made by other committees. The chair thought it was more for the audit committee of the specific case. After two and a half hours, the meeting was closed.

Click [HERE](#) for the Daily Mail article on Pools in the Park.

Click [HERE](#) for the committee papers.

# Little Panda Mandarin and Drama Club celebrates Chinese New Year

On Sunday 11 February, children from the East Sheen Little Panda Mandarin and Drama Club took part in an exciting performance packed with dancing dragons, drama, song and poetry.

The annual event was attended by Deputy Mayor Councillor Fiona Sacks who warmly addressed the audience and local MP Sarah Onlney. The event was hosted by Head of Little Panda School Xiaoyu Shi and local actor and co-head, Max Gold.

The charming mixture of performers ranged from the younger children, coming from local school's such as Tower House and Sheen Mount and older students who have been members of the club for 10 years. As the host mentioned, these talented older performers could perhaps now be described as 'Giant Pandas' rather than 'little ones'.

One of the highlights of the show was the performance of a short play about a Chinese Olympic high jumper who is inspired by the flight of the dragon. The climax of the performance was a rendition of a Happy New Year song performed in Mandarin by the younger children, dressed in sparkling costumes which matched their glowing faces.

The delightful performance was followed by a raffle with prizes generously donated by local businesses. Many guests stayed on for a delicious Chinese banquet.

Little Panda Mandarin and Drama club look forward to bringing in the year of the Snake in 2025.



# Marble Hill House

## A joint creative project between English Heritage and Coney

Are you looking for a creative and playful project to get involved in 2024, as well as opportunities to meet other young people? Do you have an interest in game-design, theatre and/or history and heritage, including Black and colonial history?

Come and join theatre-makers Coney for two creative weekends at Marble Hill, exploring how to create games and interactive theatre inspired by heritage sites.

We are looking for a diverse group of young people aged 16-21. No experience of making art, games or knowledge of Marble Hill's history is needed - just be interested and open to having fun.

Dates: 24-25 February & 2-3 March 2024, 10.30-4.30pm (participants must attend both weekends)  
Venue: Richmond Rd, Twickenham TW1 2NL  
Other practical details: lunch and reasonable travel expenses are included.

How to take part: please follow [this link](#) to provide your contact details and to provide a short written or video statement about why you would like to be involved.



### NEW PROJECT ALERT!

**Join us for an awesome, free creative opportunity!**

**24-25 February & 2-3 March 2024, 10.30-4.30pm**

Come and join BAFTA-winning theatre-makers Coney, and English Heritage staff for two creative weekends at Marble Hill House in Richmond, exploring how to create games and interactive theatre inspired by heritage sites and their untold stories.

Lunch and travel expenses provided.

#### We're looking for:

- A diverse group of young people aged 16-21
- No experience of making art, games or knowledge of Marble Hill's history is needed - you just need to be curious, interested and open to having fun!

#### You'll get the chance to:

- Investigate Marble Hill's history, including its colonial past
- Learn about game design and interactive theatre-making with an exciting group of artists
- Develop the ideas for a new interactive smartphone game, launching at Marble Hill in summer 2024

#### Sign up [here!](#)

See Coney's previous work [here](#) (Common Ground)  
See English Heritage youth engagement work [here](#).  
For more information, please contact:  
Chania.Fox@english-heritage.org.uk



ENGLISH  
HERITAGE



# St Mary's Alumnus Elected as Member of Parliament

Alumnus of St Mary's University, Twickenham (SMU), Damien Egan has been elected as the new Member of Parliament (MP) for the Kingswood Constituency.

Damien, who graduated from Drama in 2004, has a long history in politics. He served as a councillor in Lewisham from 2010-2018, and a cabinet member from 2014. He was subsequently the directly elected Mayor of Lewisham from 2018-2024, resigning to contest the by-election.

He had already been selected as a parliamentary candidate for the Bristol North-East constituency at the next general election. He will contest this seat at the next general election, with the Kingswood Constituency due to be dissolved as part of a review of electoral boundaries.

Speaking of Damien's election, St Mary's Vice-Chancellor Anthony McClaran said, "Securing election to House of Parliament is a significant achievement and we wish Damien every success at the start of his parliamentary career."

The Kingswood by-election was triggered by the resignation of the previous MP Chris Skidmore. Whilst serving as Universities Minister in 2018, Chris visited SMU to meet trainee teachers, discuss innovative methods of degree delivery and tour the University's cutting edge sport science research facilities.



## HRUC Celebrates National Apprenticeship Week

Throughout the week from 5th to 11th February, Richmond upon Thames College (RuTC), along with colleges around the country, celebrated National Apprenticeship Week (NAW) 2024.

National Apprenticeship Week brings together those that are passionate about apprenticeships and is an opportunity to celebrate the achievements of apprentices and the institutions that support them, noting the positive impact they make to communities, organisations and individuals.

NAW 2024 was the 17th annual celebration of apprenticeships and the theme this year was 'Skills for Life'. On each day throughout the week, students at RuTC were given the opportunity to learn more about different aspects of apprenticeships, the themes included 'Employer Tuesday,' 'Apprentice Wednesday' and 'Celebration Friday'.



On Tuesday 6th February, RuTC hosted an employers' breakfast event in partnership with Richmond Chamber of Commerce, inviting our apprentices' employers along with other guests into the college to learn more about the programme, its successes and explore the many benefits of apprenticeships.

The event was a huge success, with many esteemed attendees, including the Mayor of Richmond - Councillor Suzette Nicholson, HRUC Group Principal and CEO - Keith Smith, Chief Executive of Richmond Chamber of Commerce - Anne Newton. Former RuTC apprentice, Mateusz Spicha, spoke about his experience working at the Royal Hospital for Neuro-disability and his road to receiving a distinction award as a final grade. Guests also heard from RuTC Principal, Gavin Hughes, on the offerings for apprentices at RuTC and updates on the progress of our new STEM building, which will be ready for our 2024 intake of apprentices.

Other activities included a number of workshops for current RuTC students about the opportunities and benefits of progressing into the world of work as an apprentice.

[Learn more about our apprenticeship programme and how to apply here.](#)



# Discovery Of Worlds First Ever Desktop Computer (The Q1) Found In A House Clearance In The UK

Model set the precedent for computing as we know it today



The world's first ever desktop computer, the Q1 launched in 1972

*Just Clear* are excited to announce that it has discovered two (out of only three in the world that are known), of the very first ever desktop computers that we know of today as the standard PC. The discovery was made during a house clearance when *Just Clear*, who are unique in that they try to salvage and reuse as many items as possible when clearing homes, saw the machines and thought they looked quite interesting.

They had no idea what they had found and put them aside until they could do more research.



Many internet searches later and with not much more information, the founder of *Just Clear*, Brendan O'Shea decided to consult with an expert, only to be shocked to be told that this model was the world's very first fully-integrated desktop computer powered by a single chip microprocessor for CPU. Launched with the intel 8008 processor in December 1972, the model looked more like a typewriter, but the creation of this model marked an important milestone in computing history. The series was marketed as a well-built, high-quality unit with a unique industrial design and featured a neon-orange plasma display. This first true microcomputer was manufactured by the Q1 Corporation in the United States and only a few

were imported into Britain at the time.

Commenting on the find, Brendan said: "Our teams find all sorts of things while clearing houses on a daily basis, some with historical significance, but never did I imagine that we'd find something so important to the field of technology and the history of computing! Occasionally, we encounter items deemed important enough to preserve and archive for the future in an

auction sale or, in this case, an exhibition. I'm told that these models are extremely rare, so to find a pair of them is beyond exciting. The computers were buried under a hoard of boxes and initially we just thought they were two nice pieces of 70's computing history that perhaps we would have data-wiped if not suitable for reuse and sent to our E-waste stream. However, after consulting our advisors and conducting research over time, we realised we had, in fact uncovered two ultra-rare items, of which there are only three known in existence in the world today. We are so honoured to be able to share these pieces of history with the public and contribute to the celebration of vintage computing”.

The pair have been showcased as the main highlight of a technology exhibition at Kingston University titled **Creating the Everything Device: Showcasing the machines that built the future** which runs until February 17<sup>th</sup>, 2024 (inclusive), which has been curated by Mr. Paul Neve and Professor Islam Choudhury at Kingston University's Computer Science Department. Commenting on them, Paul Neve said; “There would be no PCs, no Macs, no Apple or Android phones without the Q1 Corporation. The early pioneers in the 1970's and 1980's laid the foundation for today's 'everything' device - the modern computer, which is so ubiquitous in everyday life. We rely on computers for our work, communication, productivity and entertainment, but without the early trailblazers none of this would exist”.



The current exhibition features sixty different computers and gaming machines, some first generation, including Atari, Sinclair ZX81, ZX Spectrum, Sinclair QL, BBC Micro, Acorn Electron, Amstrad, Commodore, and the Dragon 32. However we will watch with interest what will happen to the historic Q1s, as they will either be offered for auction, or sold privately, no doubt to a computer or technology enthusiast, or a museum in the UK, or abroad. As they were such a vital component in technological history Brendan is hoping for the latter, as the machine not only helps us to understand where we've come from and how technology has developed, but it also reminds us of how far we've come.



Photos © Just Clear

**Just Clear®**

**Kingston University London**



# Match Preview: Brentford v Liverpool

**Analysis, team news, match officials and more. Here's everything you need to know ahead of Brentford's Premier League game against Liverpool, which will be broadcast live on TNT Sports (12.30pm kick-off)**

Written by Brentford Football Club

Brentford welcome Liverpool to Gtech Community Stadium on Saturday in the early Premier League kick-off (12.30pm), live on *TNT Sports*.

The Bees are boosted by a 2-0 win over Wolverhampton Wanderers last time out, while league leaders Liverpool have won four of their last five.

## Pre-match Analysis

Stephen Gillett, Playmaker Stats: Saturday's clash promises to be an intriguing tactical battle.

In any sport, at any level, you need to be on your mettle when the league leaders roll into town - and Brentford will want to bring their A game when they host Liverpool at Gtech Community Stadium in Saturday's early Premier League kick-off.

The tactical battle between Thomas Frank and Jürgen Klopp promises to be an intriguing one, the Merseysiders' manager branding Brentford a "super difficult opponent" with "really good ideas" after the two sides' last meeting at Anfield last November.



## Head to Head

	Comparisons	
34	Goals	55
39	Goals Conceded	23
214	Shots	326
46%	Possession	60%
1	Red Cards	5
50	Yellow Cards	45



There are plenty of team stats to mull over prior to the game - for example, Liverpool average more shots (19) and the joint-most accurate crosses (5.2, level with Brentford) per game in the Premier League this season - but there will be fascinating individual duels all over the park.

One outstanding match-up to keep an eye on is that between Brentford's Ethan Pinnock and his Liverpool counterpart Virgil van Dijk. Both defensive powerhouses are enjoying fantastic seasons for their respective clubs, and they feature in a number of chart-topping stats between them.

Pinnock ranks first for clearances (141), second for aerials won (93), fourth for interceptions (36) and 10th for shots blocked (21) this term in the top flight, while Van Dijk leads the division for headers won (100) and shots from set-pieces (25), the Netherlands international in the Premier League's top 10 for a raft of other statistics.

At the sharp end of things, the head-to-head between Brentford's Ivan Toney and Liverpool's Darwin Núñez offers another fascinating subplot to follow.

Back from a lengthy suspension, Toney has hit the ground running: a clinical first-time finish in the Bees' 2-0 win over Wolves last weekend marking his third goal in four games.

Despite his spell on the sidelines, Toney's trademark physicality and goal threat are clearly in evidence, and he already ranks second for shots (2.5) and aerials won (3.5) per game for the Bees since his return to action.

Liverpool livewire Núñez, meanwhile, offers Klopp's side genuine penetration and unpredictability in the final third.

The Uruguayan (78) has taken on more shots than any player in the Premier League this season, although his ongoing feud with the frame of the goal is gaining notoriety: the 24-year-old hitting the woodwork seven times already in 2023/24 (Liverpool denied by the post or bar on 14 occasions!).

Zooming out beyond personal battles, it is worth noting that Liverpool will arguably be without their most fearsome weapon when they face Brentford at the Gtech... and we're not talking about Mohamed Salah.

Injured last month while at the Africa Cup of Nations, 'The Egyptian King' remains the most productive player in the top flight this season with 14 goals and eight assists, and he will no doubt be missed by the Reds on Saturday.

However, the special ingredient missing for Liverpool relates to location rather than personnel - as they will be shorn of their invincible home form.

Unbeaten on their own patch (17 wins and two draws) in 19 games across all competitions this season, Liverpool at Anfield represents one of the hardest fixtures in football.

Away from home, the Reds have still been formidable this term (nine wins, five draws and four losses), but they have at least been beatable - their two Premier League defeats this season both dished out in London, at Arsenal and Tottenham Hotspur.

Roared on by a raucous home crowd in the capital, Brentford will once again look to make life "super difficult" for the current table-toppers.

## Scout Report

Liverpool looking to make more history in Klopp's final months in charge

Liverpool were already motoring in the Premier League before they recorded a convincing 3-0 win over Brentford at Anfield in mid-November.

Jürgen Klopp's side had won seven of their first 11 games and were well on their way to the top of the pile, which they reached just under a month later after coming from behind to beat Crystal Palace 2-1 at Selhurst Park.

Mohamed Salah scored the all-important equaliser that day - and joined an exclusive club as only the fifth player in history to reach the 200-goal mark for the club. "I am sure we can do something special this year," the Egyptian said afterwards.

Draws with old foes Manchester United and Arsenal in the two games before Christmas temporarily knocked them back into second, but since Boxing Day, they have stormed back and led the way ever since, with five wins from the last six.

However, though they currently lead both Manchester City and Arsenal by two points, there would be a much bigger comfort blanket had they not lost the return fixture against the latter just under a fortnight ago.

Gabriel's own goal on the stroke of half-time cancelled out Bukayo Saka's opener at the Emirates, with strikes from Gabriel Martnelli and Leandro Trossard taking the game away from them and reinvigorating the Gunners' title hopes.

It was the second heavy blow that had been landed on them in the space of eight days, with Klopp having rocked the club when he announced his intention to leave at the conclusion of the season, by which point he will have been in charge for almost nine years.

"This club, especially with the team we have and all the super things we have, needs on top of that a manager in his top game and top level," said Klopp. "I cannot be that anymore. I wish this club for the future the very, very best."

There is no denying that the focus from here on in for the Reds will be to ensure one of their greatest-ever managers will leave on a high by adding to the six trophies they have already won during his time on Merseyside to date.

It just so happens that achieving the quadruple is, at this moment in time, entirely plausible.

They have a place in the FA Cup fifth round, where they will face Championship side Southampton later this month, and a place in the last-16 of the Europa League, with their opponents to be decided in the draw on 23 February.

There is also the Carabao Cup final to look forward to a couple of days after that. At Wembley, there will be a repeat of the 2022 final against Chelsea. With the Blues enduring another difficult campaign so far, they will be fancying their chances of silverware - though their confidence will certainly be unspoken.

Klopp has long been a vocal critic of the packed schedule his side have to contend with in their attempt to be successful, but if he can tolerate it a little longer, the dream of going out with a bang might just come true.

## **In the Dugout**

### **Jürgen Klopp**

Jürgen Klopp was an amateur footballer in his youth and, after studying at university and playing for Eintracht Frankfurt's reserve team, it was not until after his 23rd birthday that his playing career began when 2 Bundesliga side Mainz signed him.

Klopp retired at 33 in February 2001 when he was installed as Eckhard Krautzun's successor at Mainz.

Just over two years later, he guided the club to promotion to the Bundesliga, where they spent three seasons before being relegated back to the second tier. When Klopp could only guide the club to fourth in 2007/08, he resigned.

His reputation had blossomed during his time with Die Nullffunfer and, before long, he had been appointed by Borussia Dortmund.

It took a little bit of time for his plans to take effect, but the club became a real powerhouse under his direction.

Between the 2010/11 and 2014/15 seasons, Dortmund won the Bundesliga twice, finished as runners-up twice, won the DFB Pokal twice, the German Super Cup twice, and reached the 2012/13 Champions League final.

The conclusion of the 2014/15 season saw Klopp depart after seven years and he had a rare breather before taking over from Brendan Rodgers at Liverpool in the October.

At Anfield, he has won the lot: the FA Cup, the Carabao Cup, the Community Shield, the UEFA Super Cup, the Club World Cup, the Champions League twice and, of course, that elusive first Premier League title in 2019/20.

He has written himself into Liverpool folklore a hundred times over and, having passed eight years in the job in October, he is the current longest-serving boss in the top flight and the third longest-serving across the top four divisions of English football.

However, following last month's announcement, he will leave Anfield at the end of the season.



# Brentford v Liverpool matchday guide

Visiting Gtech Community Stadium for Brentford's Premier League fixture against Liverpool? Here's what you need to know

Written by Brentford Football Club

**On Saturday 17 February, Brentford host Liverpool at Gtech Community Stadium in the Premier League.** The game kicks off at 12.30pm and will be broadcast live on *TNT Sports*.

## Ticket checks and ticket touting

We strongly advise all fans get to the stadium at least 45 minutes before kick-off. There will be additional ticket checks on matchday for both the home and away areas. Please allow extra time on entry for these checks. All attending fans are reminded that failure to show the correct ticket on entry will result in refusal of entry.

Fans are reminded that it is illegal to sell, or offer to sell, tickets to Brentford FC matches without the club's authorisation. Please see our webpage on [ticket touting](#) for more information.

No away fans are permitted in home areas. Any away fans found in these areas will be ejected from the stadium. Any home fans found supplying away fans with tickets in the home areas will be subject to club sanctions.

We also encourage our attending fans to show respect to our visitors at all times before, during and after the match.

## Travel - Gunnersbury station will be closed after full-time

Gunnersbury station will be exit-only before kick-off from 10.30am and will be fully closed after the match, due to bad weather causing unsafe conditions at the station. **All supporters will not be able to travel via Gunnersbury station after the game.**

Fans should [plan their journey](#) to Gtech Community Stadium ahead of time and arrive early to avoid delays.

An additional four South Western Railway services will be deployed to Kew Bridge station to assist your travel to and from the stadium. There will be two additional services before and after the match.

No disruptions are expected on matchday.

## Parking

We advise you to take public transport or pre-book parking through our [website](#).

All matchday parking must be pre-booked ahead of the fixture. No reserved parking is available to supporters unless a space has been pre-booked.

## Countdown to kick-off - the timings you need to know

- 9am: Bees Superstore opens (closes at 6pm)
- 9am: Box office opens (closes at half-time)
- 10am: Premium lounges open
- 10.30am: Fan Hive opens with Stubble & Co and trading card swap shop
- 12.30pm: Kick-off
- 2.30pm: Personal safety Walk and Talk begins
- 5.30pm: The Dugout closes (bar closes at 5pm)



# England Men's A Squad for Portugal Fixture Announced

The England Men's A side returns for an encounter with Portugal at Leicester Tigers Stadium on Sunday 25 February, kicking-off at 13:00 GMT with tickets priced from £17.50 for adults. This is the first time that England Men's A has played since a fixture against South Africa A in 2016. Attending fans will have the opportunity to watch the future stars of the England Men's senior team in action.

Portugal will take on England off the back of a strong showing in last year's Rugby World Cup, which included a draw against Georgia followed by a maiden tournament win over quarter-finalists Fiji.

An exciting provisional 27-man squad has been announced that includes a blend of experience and youth, with five players already capped at senior international level and some younger stars just at the start of their England careers. Jamie Blamire, Nick Isiekwe, Tom Pearson, Harry Randall and Ollie Hassell-Collins make up the quintet who have already represented the senior side.

21 of the 27 involved players have been brought through the England Rugby pathway and achieved caps at either U18 or U20 level within the men's system.

The squad will assemble at Loughborough University next Tuesday (20 February) to begin preparations for the fixture later that week, where they will in addition be joined by some players presently training with the senior squad.

The squad was selected by England senior men's head coach Steve Borthwick in consultation with England Men's A head coach George Skivington, defence coach Dom Waldouck, attack coach Sam Vesty and RFU Executive Director of Performance Rugby Conor O'Shea.

England head coach, Steve Borthwick, said:

*"We're delighted to see the return of A Team rugby as such an important part of our rugby's development and to announce the squad for the forthcoming fixture against Portugal.*

*"We have got a lot of talented and exciting young players in England, and this is a great opportunity for them to show they can play international rugby. We have selected players in this initial squad who we believe have the potential to be in the England team in the very near future.*

*"One of the very important aspects of this A Team is to provide a platform for players who have come out of the U20s and who are playing club rugby, allowing them to experience the international environment.*

*"It's great to have the fixture at the Leicester Tigers' stadium. It's an area where the supporters know and love their rugby. I have no doubt the players will revel in the support they will get from the stands."*

Tickets to England A's match-up with Portugal this February are available to purchase [here](#).

## England Men's A squad for Portugal:

### Forwards

Fin Baxter (Harlequins)  
Jamie Blamire (Newcastle Falcons, 7 caps)  
Tarek Haffar (Northampton Saints)  
Sam Riley (Harlequins)  
Seb Blake (Gloucester)  
Josh Iosefa Scott (Exeter Chiefs)  
James Harper (Sale Sharks)  
Nick Isiekwe (Saracens, 11 caps)

Arthur Clark (Gloucester)  
Ben Bamber (Sale Sharks)  
Rusiate Tuima (Exeter Chiefs)  
Tom Pearson (Northampton Saints, 1 cap)  
Guy Pepper (Newcastle Falcons)  
Alfie Barbeary (Bath Rugby)  
Greg Fisilau (Exeter Chiefs)  
Jack Clement (Gloucester)

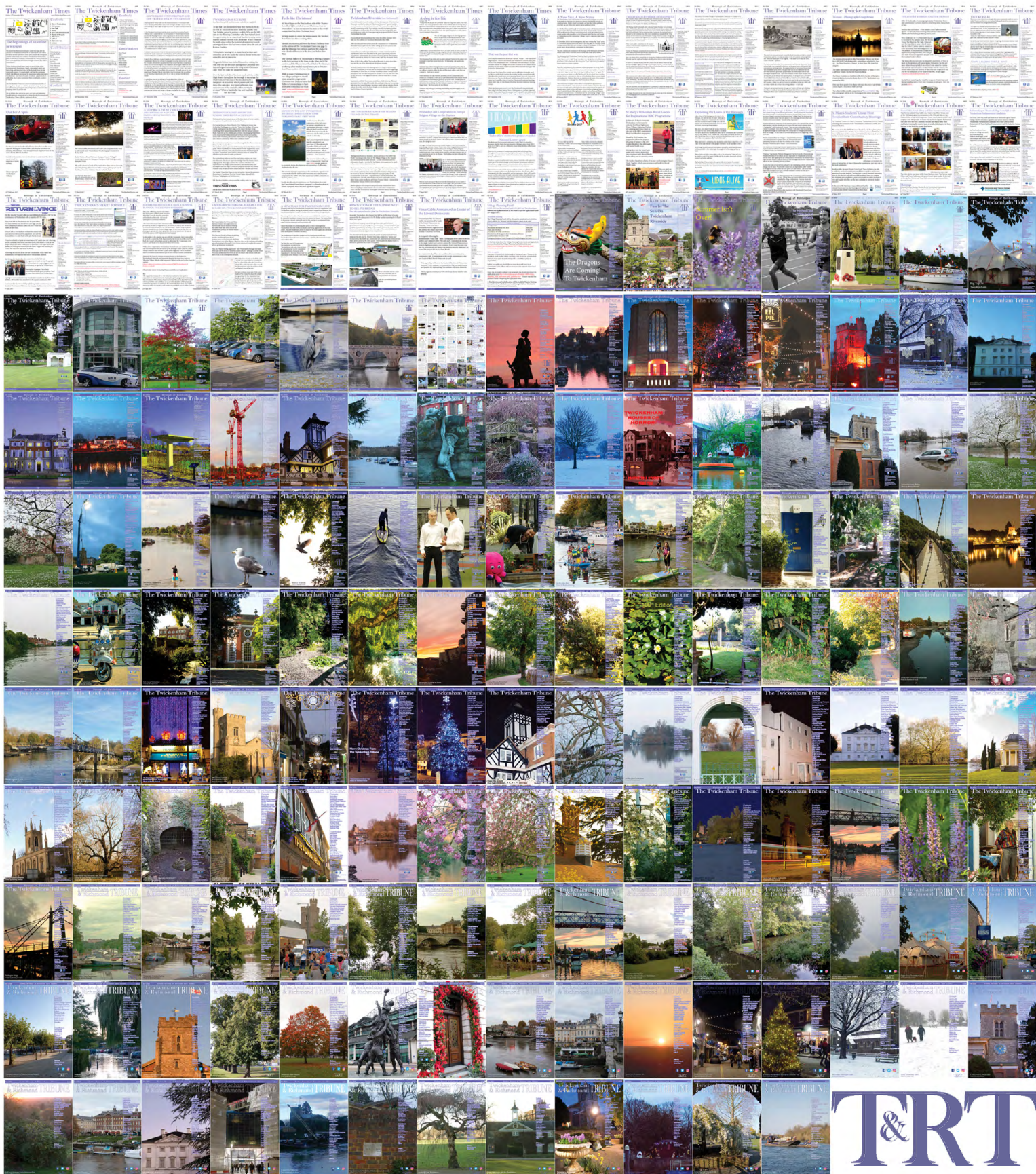
### Backs

Caolan Englefield (Gloucester)  
Harry Randall (Bristol Bears, 2 caps)  
Charlie Atkinson (Gloucester)  
Jamie Shillcock (Leicester Tigers)  
Oliver Sleightholme (Northampton Saints)

Oliver Hartley (Saracens)  
Rekeiti Ma'asi-White (Sale Sharks)  
Cadan Murley (Harlequins)  
Ollie Hassell-Collins (Leicester Tigers, 2 caps)  
Josh Hodge (Exeter Chiefs)  
Sam Harris (Bath Rugby)



# 380 editions of the **Twickenham & Richmond Tribune** online - Lots to read: News, Reviews, History, Sports and On-going Sagas in the Borough of Richmond upon Thames



Half Page

Quarter Page  
Landscape

Quarter Page Portrait

Eighth Page

Eighth Page  
Landscape

Example advert sizes shown above

Thousands read The Twickenham & Richmond Tribune

If you are reading this you could be advertising your business with  
The Twickenham & Richmond Tribune. Community rates are  
available

Contact: [advertise@TwickenhamTribune.com](mailto:advertise@TwickenhamTribune.com)

View ad details at [www.TwickenhamTribune.com/advertise](http://www.TwickenhamTribune.com/advertise)

**Contact**

[contact@TwickenhamTribune.com](mailto:contact@TwickenhamTribune.com)  
[letters@TwickenhamTribune.com](mailto:letters@TwickenhamTribune.com)  
[advertise@TwickenhamTribune.com](mailto:advertise@TwickenhamTribune.com)



**Published by:**

Twickenham & Richmond Tribune (in association with World InfoZone Limited)

Registered in England & Wales

Reg No 10549345

The Twickenham Tribune is registered with the ICO under the Data Protection Act, Reg No ZA224725

©Twickenham & Richmond Tribune. All rights reserved. No part of this publication may be used or reproduced without the permission of Twickenham & Richmond Tribune. While we take reasonable efforts, this online newspaper cannot be held responsible for the accuracy or reliability of information. The views and opinions in these pages do not necessarily represent those of The Twickenham & Richmond Tribune.

[Terms & Conditions](#)